

4-2009

Soil zinc content, groundwater usage, and prostate cancer incidence in South Carolina

Sara E. Wagner
University of South Carolina - Columbia

James B. Burch
University of South Carolina - Columbia

Jim Hussey
University of South Carolina - Columbia

Tom Temples

Susan Bolick-Aldrich

See next page for additional authors

Follow this and additional works at: https://scholarcommons.sc.edu/sph_epidemiology_biostatistics_facpub



Part of the [Public Health Commons](#)

Publication Info

Postprint version. Published in *Cancer Causes and Control*, Volume 20, Issue 3, 2009, pages 345-353. Wagner, S.E., Burch, J.B., Hussey, J., Temples, T., Bolick-Aldrich, S., Mosley-Broughton, C., . . . Hébert, J.R. (2009). Soil zinc content, groundwater usage, and prostate cancer incidence in South Carolina. *Cancer Causes and Control*, 20(3), 345-353. doi: 10.1007/s10552-008-9248-0
© 2008 Springer Science+Business Media B.V.
The final publication is available at www.springerlink.com.

This Article is brought to you by the Epidemiology and Biostatistics at Scholar Commons. It has been accepted for inclusion in Faculty Publications by an authorized administrator of Scholar Commons. For more information, please contact digres@mailbox.sc.edu.

Author(s)

Sara E. Wagner, James B. Burch, Jim Hussey, Tom Temples, Susan Bolick-Aldrich, Catishia Mosley-Broughton, Yuan Liu, and James R. Hébert



Published in final edited form as:

Cancer Causes Control. 2009 April ; 20(3): 345–353. doi:10.1007/s10552-008-9248-0.

Soil zinc content, groundwater usage, and prostate cancer incidence in South Carolina

Sara E. Wagner,

Cancer Prevention and Control Program, University of South Carolina, 2221 Devine Street, Suite 222, Columbia, SC 29208, USA. Arnold School of Public Health, Department of Epidemiology and Biostatistics, University of South Carolina, Columbia, SC, USA

James B. Burch,

Cancer Prevention and Control Program, University of South Carolina, 2221 Devine Street, Suite 222, Columbia, SC 29208, USA. Arnold School of Public Health, Department of Epidemiology and Biostatistics, University of South Carolina, Columbia, SC, USA

Jim Hussey,

Arnold School of Public Health, Department of Epidemiology and Biostatistics, University of South Carolina, Columbia, SC, USA

Tom Temples,

Advanced Environmental Solutions, LLC, Lexington, SC, USA

Susan Bolick-Aldrich,

Department of Health and Environmental Control, South Carolina Central Cancer Registry, Columbia, SC, USA

Catishia Mosley-Broughton,

Department of Health and Environmental Control, South Carolina Central Cancer Registry, Columbia, SC, USA

Yuan Liu, and

Arnold School of Public Health, Department of Epidemiology and Biostatistics, University of South Carolina, Columbia, SC, USA

James R. Hebert

Cancer Prevention and Control Program, University of South Carolina, 2221 Devine Street, Suite 222, Columbia, SC 29208, USA. Arnold School of Public Health, Department of Epidemiology and Biostatistics, University of South Carolina, Columbia, SC, USA

Sara E. Wagner: wagnerse@mailbox.sc.edu

Abstract

Background—Prostate cancer (PrCA) incidence in South Carolina (SC) exceeds the national average, particularly among African Americans (AAs). Though data are limited, low environmental zinc exposures and down-regulation of prostatic zinc transporter proteins among AAs may explain, in part, the racial PrCA disparity.

Methods—Age-adjusted PrCA rates were calculated by census tract. Demographic data were obtained from the 1990 census. Hazardous waste site locations and soil zinc concentrations were obtained from existing federal and state databases. A geographic information system and Poisson

regression were used to test the hypothesis that census tracts with reduced soil zinc concentrations, elevated groundwater use, or more agricultural or hazardous waste sites had elevated PrCA risks.

Results—Census tracts with high groundwater use and low zinc concentrations had higher PrCA rate ratios (RR: 1.270; 95% confidence interval: 1.079, 1.505). This effect was not more apparent in areas populated primarily by AAs.

Conclusion—Increased PrCA rates were associated with reduced soil zinc concentrations and elevated groundwater use, although this observation is not likely to contribute to SC's racial PrCA disparity. Statewide mapping and statistical modeling of relationships between environmental factors, demographics, and cancer incidence can be used to screen hypotheses focusing on novel PrCA risk factors.

Keywords

South Carolina; Cancer statistics; Race; Geographic information systems; Disparities

Introduction

Prostate cancer (PrCA) is the most frequently diagnosed cancer in the United States [1]. Nationwide, PrCA incidence is greater among African-American (AA) compared with European-American (EA) or Asian-American men [2,3]. South Carolina (SC), which is composed of approximately 29% AAs and 67% EAs [4], is unique in its racial disparity in PrCA incidence and mortality. PrCA incidence in SC is >75% higher among AA men compared with EA men, whereas the national differential is ≈60% [5]. In addition, the PrCA mortality rate among AAs residing in SC (76.7 per 100,000) is consistently one of the highest in the world, and is 2.81 times higher than PrCA mortality among EA men in SC [5]. While the proportion of men screened for PrCA in SC via digital rectal examination is somewhat lower among AAs (75%) compared with EAs (85%), screening rates using prostate-specific antigen (PSA) are similar among AAs and EAs (both 66% in 2004), with no major differences noted over time [6]. In SC, 17% of AA men are diagnosed at a late stage (regional/distant) compared to 12% of EA men; AA men also tend to have tumors with a higher pathological grade compared to EA men in SC [6]. The only firmly established risk factors for PrCA are increasing age, a family history of the disease, and AA race [7]. Results from studies attempting to identify other PrCA risk factors have been equivocal [6,8]. Potential risk factors include: factors related to socioeconomic status including education, literacy, and financial resources; genetic and androgenic factors; exposure to certain environmental agents including chemical constituents from hazardous waste sites, pesticide use and farming, some toxic heavy metals (e.g., cadmium, uranium); and dietary factors including reduced intake of some essential trace elements (e.g., zinc, selenium) [7,9–16]. There is a clear need to evaluate potential environmental factors or combinations of factors that may be responsible for elevated rates of PrCA among residents in the United States and other Western countries, especially among AAs in SC.

Zinc may play a role in intensifying PrCA susceptibility [17]. In a normal prostate, zinc levels accumulate naturally [18] to inhibit citrate oxidation and to induce apoptosis [19,20]. Impairment of zinc accumulation is associated with reduced prostatic zinc concentrations, and with prostate tumor growth in vitro [19]. Because AAs may have evolutionarily down-regulated a specific type of zinc transporter to avoid toxicity in zinc-rich ancestral West African soils, it is conceivable that individuals with this characteristic phenotype have an impaired ability to incorporate zinc into the prostate [21]. Although the evidence is somewhat limited, these observations suggest that zinc transporter down-regulation may explain, at least in part, elevated PrCA rates among AA men.

There are multiple pathways by which humans may be exposed to zinc, one of which is leaching of soil zinc into groundwater [22]. There are many factors that can influence zinc mobility in soil including solubility, capacity for cation exchange, soil pH, redox potential, zinc concentrations, soil:solution mass ratio, groundwater contact time, and the chemical species found in soil [23–25]. In general, however, metal concentrations in groundwater tend to be derived from surrounding soils [25].

The purpose of this study was to examine the role of environmental factors, including groundwater use and soil zinc concentrations, on PrCA rates among AA and EA populations in SC. Specifically, we sought to test the hypothesis that census tracts with low concentrations of soil zinc are associated with higher PrCA rates, and that this relationship is stronger in areas with more AA men compared to areas populated primarily by EAs. We used a geographic information system (GIS) to characterize soil zinc concentrations, groundwater consumption, agricultural land use, hazardous waste site locations, and PrCA cases in SC. Spatial statistical modeling was used to evaluate the relationship between PrCA cases and environmental factors. To evaluate their potential link with racial PrCA disparities in SC, we not only performed analyses among all incident cases in SC from 1996 to 2002, but also performed analyses among men grouped into areas with predominantly AA or EA populations.

Methods

GIS ArcMAP software version 9.1 (ESRI, Redlands, CA) was used to combine data from the following sources: PrCA cases from the SC Central Cancer Registry (SCCCR); demographic information from the United States Census Bureau; and soil zinc data from the SC Department of Health and Environmental Control (DHEC), United States Geological Survey (USGS) PLUTO, and Clemson University databases. The age distribution, proportion of AAs, median household income, number of agricultural areas, and the proportion of individuals using groundwater as their main water source were obtained, by census tract, from 1990 United States Census Bureau data [26]. The 1990 census was selected because: (1) the percentage of the population using groundwater was obtained only in this year, and (2) it allowed for a latency of six- to twelve-years prior to assessing the relationship between potential population exposures and PrCA incidence. The number of hazardous waste sites within each census tract listed under the Comprehensive Environmental Response, Compensation, and Liability Act (CERCLA) was obtained from United States Environmental Protection Agency (EPA) data [27].

Soil zinc concentrations in parts per million (ppm) were obtained from the SC DHEC (0.3%), PLUTO (0.1%), and Clemson University (99.6%) databases. The SC DHEC database ($n = 253$ samples) is composed of soil samples collected by SC DHEC and EPA personnel between 1985 and 1995; 71% were collected from surface soil, 11% from shallow subsurface soil, and 18% from deep soil. SC DHEC and private laboratories analyzed these samples using standardized inductively coupled plasma (ICP), atomic absorption furnace, and atomic absorption direct aspiration methods [28]. The PLUTO database ($n = 78$ samples) contains inorganic geochemical data from the analytical laboratories of the Geologic Division of USGS. Samples were collected and analyzed beginning in 1960 and ending in 1995 to support a number of USGS programs. Zinc data contained in the Clemson University database ($n = 79,055$ samples) originate from soil samples collected from residential and occupational yard, farm, and other land areas sent to Clemson University Soil Testing Laboratory for content analysis. Soil zinc concentrations were determined by ICP atomic emission spectrometry using a standardized protocol that included established quality control procedures. This laboratory participates in the North America Proficiency Testing soil sample exchange program, which allows for comparison of its analytical techniques and data with those from other laboratories to ensure data accuracy and reliability [29]. Five Clemson University soil data files (2001–

2005) containing addresses but not sample latitude and longitude were geocoded using the State e911 center line file as the reference layer [30], and then assigning a census tract to each sample address. Only automatic batch matching (i.e., no manual interactive matching) was used, and the final data set from this source included only Tier five matches (i.e., matched to the exact address) to maximize data accuracy. Zinc concentrations at each sample location were assigned to a census tract using the sample latitude and longitude or address, and spatially joining them with the 1990 SC census tract boundary shapefile [31].

Geometric mean zinc concentrations were determined by averaging log transformed values for all soil samples within a given census tract. In accordance with USGS protocols, if the raw exposure data file included an observation of '0' for the concentration of an element (1% of all data), it was converted to half the value of the detection limit [32]. Census tracts with a missing zinc concentration were assigned the average of its neighboring tracts ($n = 52$; 6% of all SC census tracts).

All PrCA cases diagnosed in SC between 1 January 1996 and 31 December 2002 were registered with the SCCR according to standardized procedures [33]. The SCCR has data-sharing agreements with 20 states in order to ensure that the vast majority of incident cases are recorded. Since its inception in 1996, the SCCR has consistently received the highest rating for data completeness (>97.5%), timeliness, and quality from the North American Association of Central Cancer Registries. A peak in PrCA incidence occurred in the early 1990's due to the implementation of PSA screening [34,35], although PrCA rates among both AA and EA men in SC were stable during the period of study, with slight decreases in more recent years [6]. Additionally, the population age structure of SC did not change significantly in the last decade [36]. The residential latitude and longitude at date of diagnosis for each PrCA case was spatially joined to the 1990 census tract boundary shapefile to determine the residential census tract for each case. Age adjustment of PrCA incidence was conducted via the indirect method [37], using statewide age-specific PrCA incidence rates among males over 40 years of age and the age-specific population distribution within each census tract for the year 1990. Standardized incidence ratios (SIRs) with 95% confidence intervals (CIs) were calculated for each tract using the statewide age-adjusted PrCA incidence rate (1996–2002) as the standard [38]. PrCA SIRs and soil zinc concentrations were then mapped by census tract to illustrate the extent of their spatial overlap.

Statistical analysis

Separate spatial Poisson regression models were used to assess the effects of soil zinc concentrations, groundwater use, agricultural land use, and the number of hazardous waste sites on new PrCA cases during the study period, after adjusting for spatial variation, median household income, and race. The dependent variable in all models was the number of PrCA cases with an offset variable included in each model to account for the age-adjusted expected number of cases. Thus, the standardizations in these models target the expected case numbers, allowing for the use of simple counts as the dependent variable. Separate analyses focused on areas with elevated groundwater use in combination with zinc or other exposure factors or with race to determine their impact on new PrCA cases. The relationship between PrCA incidence and soil zinc concentrations was assessed using zinc either as a continuous variable or as a categorical variable with several different cut points. The cut points presented below were chosen to attain large enough group sizes to optimize potential dose-response relationships and to ensure that the statistical models would converge. Interpretation of the results was not altered by analyses that used different cut points. We assumed the standard zero-mean Gaussian prior distribution for uncorrelated heterogeneity, a conditional autoregressive (CAR) prior distribution for correlated heterogeneity, and included an adjacency matrix in the statistical model to account for the spatial distribution of census tract neighbors. To create the adjacency

matrix, the GIS-readable shapefile of SC census tract boundaries was converted to WinBUGS-readable S-PLUS format using the transformation tool, maps2WinBUGS version 1.1.3 [39]. Posterior distributions were obtained using Bayesian modeling techniques with WinBUGS software version 1.4.1 (Imperial College and Medical Research Council, UK). Markov chain Monte Carlo (MCMC) simulation was used to perform posterior sampling, and convergence was assessed by monitoring the history, density, and autocorrelation plots. Convergence was reached after 15,000 iterations for all models. Rate ratios (RRs) were generated for each association and the statistical significance was assessed using 95% CIs.

Results

Characteristics of the SC PrCA cases and census tracts included during the study period are presented in Table 1. Of the original 20,933 PrCA cases diagnosed from 1996 to 2002, 17,665 (84%) successfully produced a Tier 5 match to a 1990 census tract. Of the 3,268 (16%) non-Tier 5 matches, 2,820 (86%) were Tier 9 matches, which indicates a match to a zip code centroid. Tier 5 and non-Tier 5 PrCA cases were similar in terms of tumor grade, stage, and age at diagnosis; however, 29% of the Tier 5 matches were AA while 44% of the non-Tier 5 matches were AA. Of the original 169,443 zinc soil samples from the Clemson University databases, 79,055 (47%) were successfully geocoded at the Tier 5 level to a 1990 SC census tract. The statewide average (standard deviation) of soil zinc concentrations in this study was 13.5 (46.6) ppm. For comparison, soil zinc concentrations in the conterminous United States range from <5 to 2,900 ppm, with an average concentration of 60 ppm [22].

When each factor was evaluated independently, there were modest increases in PrCA risk among SC census tracts with an increasing number of agricultural or CERCLA sites or with decreasing soil zinc concentrations. However, none of these associations attained statistical significance (Table 2). There were 81 census tracts (9%) that had both a higher than expected PrCA SIR and median soil zinc concentrations that were below the statewide geometric mean (Fig. 1). The combined effects of groundwater use, soil zinc concentrations, and agricultural or hazardous waste sites on PrCA occurrence are presented in Table 3. In tracts with elevated groundwater usage, low zinc concentrations were associated with an increased PrCA risk (RR: 1.270; 95% CI: 1.079, 1.505; Table 3). In areas with low groundwater use, there was no statistically significant relationship between zinc concentrations and PrCA (data not shown). An increase in the number of agricultural or hazardous waste sites among census tracts with elevated groundwater use did not influence PrCA risk (Table 3). The proportion of AAs among census tracts with high groundwater use was approximately 38%, whereas tracts with low groundwater use were composed of approximately 28% AAs (Fig. 2).

The relationship between soil zinc and PrCA was further evaluated by stratifying census tracts with elevated groundwater use into categories with a low (<34%) or high ($\geq 66\%$) proportion of AAs (Table 4). In areas populated primarily by EAs, low soil zinc concentrations were associated with a slight increase in PrCA case frequencies compared to high EA areas with elevated soil zinc and groundwater use. Among areas with elevated groundwater use that were populated primarily by AAs, there was a slight decrease in PrCA case frequencies among tracts with low soil concentrations. However, neither of these comparisons achieved statistical significance (Table 4).

Discussion

PrCA has few established risk factors, though there is strong evidence that environmental factors play an important role in explaining the large PrCA rate differences observed internationally [40,41]. Exposure to certain environmental agents may contribute to PrCA etiology [14,15,17,42–44]. The burden of disease tends to be much higher in AAs in the United

States and is especially elevated in SC AAs [6]. Zinc may play a role in PrCA susceptibility [17]; low prostate zinc concentrations are associated with PrCA cell growth in vitro [19]. In many populations, diet may be the dominant vehicle for zinc exposure, although studies examining the relationship between zinc and PrCA risks via dietary exposures have yielded mixed results [15]. There is a paucity of information on environmental (i.e., non-dietary) zinc exposures and cancer risk [22].

This study used GIS and spatial statistical modeling to explore relationships between potential environmental risk factors and PrCA incidence in SC. In particular, we focused on groundwater consumption and a biologically plausible hypothesis linking reduced zinc intake with increased PrCA risk. Census tracts with elevated ground-water consumption and low soil zinc concentrations had increased PrCA rates. These results are consistent with other studies suggesting that elevated zinc intake is associated with reduced PrCA risk [21,45,46]. However, the hypothesis that the relationship between reduced soil zinc and elevated PrCA risk would be stronger among AA than EA men was not supported. One reason for this may have been that cadmium, another metal associated with PrCA risk, was not evaluated. Cadmium has a greater affinity than zinc for certain biochemical ligands; it can displace zinc due to its similar physical and chemical properties [47], inhibit zinc's dietary absorption [48], and impede its uptake by the prostate [49,50]. There was insufficient statewide coverage of cadmium to evaluate the effect of cadmium on PrCA risk in our study, although potential interactions between cadmium and zinc may have contributed to inaccuracy in the results that were obtained, and uncertainties in their interpretation.

Several other study strengths and limitations are noteworthy. The data sources that were combined to form the soil zinc data set have inherent measurement error and other sources of variability. However, the overall zinc coverage was dense, and potential problems associated with geocoding, such as positional inaccuracy and differential match rates by geographic region [51,52], were minimized through the use of only Tier 5 matches. Nonetheless, the introduction of some misclassification through the geocoding process for PrCA data was possible, and we noted that the proportion of AAs among non-Tier 5 matches (44%) was larger than the percentage of AAs with Tier 5 addresses (29%). However, non-Tier 5 matches represented a limited proportion (16%) of all PrCA cases, and Tier 5 and non-Tier 5 PrCA cases were similar in terms of tumor grade, stage, and age at diagnosis. Among the non-Tier 5 matches, most were located in Clarendon, Horry, and Williamsburg counties for both EA and AA men. These three counties, located in northeast SC, are rural areas with relatively high groundwater consumption but with PrCA rates that were not associated with soil zinc concentrations (Figs. 1, 2). The potential bias that may have been introduced is difficult to gauge but is likely minor because the spatial distribution and groundwater consumption pattern were similar among non-Tier 5 AAs and EAs.

A fundamental limitation inherent to this ecologic design is that data were not analyzed at the individual level. The soil zinc concentrations used for these analyses may not have been entirely representative of the total amount of zinc ingestion. For example, zinc intake also may occur through other sources, such as the diet or supplementation, which was not accounted for in these analyses. In populations that grow most of their own food, soil zinc concentrations could be important for assessing exposure and PrCA risk. Because dietary sources of zinc tend to be expensive [53,54], and incomes among some AA populations in SC can be low [36,55], it is conceivable that zinc could still be an important explanatory factor for the racial PrCA disparity in SC. Areas identified in Fig. 1 represent locations where this relationship might be more directly evaluated in future studies.

The linkage of several existing databases for this analysis, including the high quality SCCCR, allowed for relatively rapid and cost-effective screening of potential PrCA-related hypotheses

with a reasonable latency between exposure and outcome. Census-derived population and environmental characteristics were both assessed for the year 1990, providing for a six- to twelve-year follow-up period of environmental exposure prior to PrCA diagnosis. The census tracts that were used as the unit of analysis were more advantageous than zip codes due to the potential for spatiotemporal discontinuity and changes in zip code boundaries [56,57]. Census tracts also provided for a finer level of analysis, making it possible to detect trends that may have been masked using broader geographic boundaries. Evaluation of cancer incidence among census tracts may result in unstable and unreliable estimates of age-adjusted rates. For this reason, the more stable statewide SC PrCA rates were used via the indirect method to estimate expected cases within each tract. Also, we did not account for in- or out-migration among census tracts during the study period. Although it is possible that some of our study population migrated during the time frame of interest, SC has a relatively stable population base [36], particularly among rural communities where groundwater use is more prevalent.

SC is a state with a heavy PrCA disease burden. The use of GIS with pre-existing data and spatial statistical modeling techniques serves as an efficient method for the evaluation of potential relationships between environmental risk factors and PrCA incidence. Results from this investigation suggest that PrCA rates may be elevated in areas with a combination of high groundwater use and reduced soil zinc concentrations. Other spatially aggregated environmental, demographic, behavioral, or social data can be similarly screened for potential associations with PrCA incidence using this approach.

Acknowledgments

Research Career Development Award, Department of Veteran's Affairs VISN-7, Charleston, South Carolina to J. B. B.; National Cancer Institute, Community Networks Program (1 U01 CA114601-01 to J. R. H.).

Abbreviations

PrCA	Prostate cancer
SC	South Carolina
AA	African-American
EA	European-American
PSA	Prostate-specific antigen
GIS	Geographic information system
RR	Rate ratio
SCCCR	South Carolina Central Cancer Registry
DHEC	Department of Health and Environmental Control
USGS	United States Geological Survey
CERCLA	Comprehensive Environmental Response, Compensation, and Liability Act
EPA	Environmental Protection Agency
ppm	Parts per million
ICP	Inductively coupled plasma
SIR	Standardized incidence ratio
CI	Confidence interval
CAR	Conditional autoregressive

MCMC Markov chain Monte Carlo

References

1. Jemal A, Siegel R, Ward E, Murray T, Xu J, Thun MJ. Cancer statistics. *CA Cancer J Clin* 2007;57(1):43–66. [PubMed: 17237035]
2. Morton RA. Racial differences in adenocarcinoma of the prostate in North American men. *Urology* 1994;44(5):637–642.10.1016/S0090-4295(94)80196-7 [PubMed: 7526522]
3. Pienta KJ, Demers R, Hoff M, Kau TY, Montie JE, Severson RK. Effect of age and race on the survival of men with prostate cancer in the metropolitan Detroit tricounty area, 1973 to 1987. *Urology* 1995;45(1):93–100.10.1016/S0090-4295(95)96996-9 [PubMed: 7817485]
4. United States Census Bureau American Community Survey. Data profile highlights. South Carolina: 2006.
5. US Cancer Statistics Working Group. United States Cancer Statistics: 2004 Incidence and Mortality. US DHHS/CDC/NIH-NCI; Atlanta, GA: 2007.
6. Drake BF, Keane TE, Mosley CM, et al. Prostate cancer disparities in South Carolina: early detection, special programs, and descriptive epidemiology. *J S C Med Assoc* 2006;102:241–249. [PubMed: 17319238]
7. Allen NE, Sauvaget C, Roddam AW, et al. A prospective study of diet and prostate cancer in Japanese men. *Cancer Causes Control* 2004;15:911–920.10.1007/s10552-004-1683-y [PubMed: 15577293]
8. Hebert JR, Ghumare SS, Gupta PC. Stage at diagnosis and relative differences in breast and prostate cancer incidence in India: and comparison to the United States. *Asian Pac J Cancer Prev* 2006;7(6):547–555. [PubMed: 17250425]
9. Thompson IM, Tangen CM, Tolcher A, Crawford ED, Eisenberger M, Moinpour CM. Association of African-American ethnic background with survival in men with metastatic prostate cancer. *J Nat Cancer Inst* 2001;93:219–225.10.1093/jnci/93.3.219 [PubMed: 11158191]
10. Deutsch E, Maggiorella L, Eschwege P, Bourhis J, Soria JC, Abdulkarim B. Environmental, genetic, and molecular features of prostate cancer. *Lancet* 2004;363:303–313.10.1016/S1470-2045(04)01468-8
11. Gilligan T. Social disparities and prostate cancer: mapping the gaps in our knowledge. *Cancer Causes Control* 2005;16:45–53.10.1007/s10552-004-1291-x [PubMed: 15750857]
12. Sanderson M, Coker AL, Logan P, Zheng W, Fadden MK. Lifestyle and prostate cancer among older African-Americans and Caucasian men in South Carolina. *Cancer Causes Control* 2004;15:647–655.10.1023/B:CACO.0000036172.63845.d4 [PubMed: 15280622]
13. Hsieh K, Albersten PC. Populations at high risk for prostate cancer. *Urol Clin N Am* 2003;30:669–676.10.1016/S0094-0143(03)00058-2
14. Faroon OM, Williams M, O'Connor R. A review of the carcinogenicity of chemicals most frequently found at National Priorities List sites. *Toxicol Ind Health* 1994;10(3):203–230. [PubMed: 7855869]
15. Navarro Silvera SA, Rohan TE. Trace elements and cancer risk: a review of the epidemiologic evidence. *Cancer Causes Control* 2007;18(1):7–27.10.1007/s10552-006-0057-z [PubMed: 17186419]
16. Bostwick DG, Burke HB, Djakiew D, et al. Human prostate cancer risk factors. *Cancer* 2004;101(10 Suppl):2371–2490.10.1002/cncr.20408 [PubMed: 15495199]
17. Franklin RB, Costello LC. Zinc as an anti-tumor agent in prostate cancer and in other cancers. *Arch Biochem Biophys* 2007;463(2):211–217.10.1016/j.abb.2007.02.033 [PubMed: 17400177]
18. Costello LC, Liu Y, Zou J, Franklin RB. Evidence for a zinc uptake transporter in human prostate cancer cells which is regulated by prolactin and testosterone. *J Biol Chem* 1999 June 18;274:17499–17504. [PubMed: 10364181]
19. Franklin RB, Feng P, Milon B, et al. hZIP1 zinc uptake transporter down regulation and zinc depletion in prostate cancer. *Mol Cancer* 2005;4(32):1–13. [PubMed: 15644144]
20. Iguchi K, Hamatake M, Ishida R, et al. Induction of necrosis by zinc in prostate carcinoma cells and identification of proteins increased in association with this induction. *Eur J Biochem* 1998;253:766–770.10.1046/j.1432-1327.1998.2530766.x [PubMed: 9654077]

21. Rishi I, Baidouri H, Abbasi JA, et al. Prostate cancer in African-American men is associated with down-regulation of zinc transporters. *Appl Immunohistochem Mol Morphol* 2003;11:252–260.
22. [ATSDR] Agency for Toxic Substances and Disease Registry. Toxicological profile for zinc. U.S. Department of Health and Human Services, Public Health Service; 2005.
23. Environmental Protection Agency (EPA). EPA440481016 PB85212009. U.S. Environmental Protection Agency, Office of Water Regulations and Standards (WH-553); Washington, DC: 1980. Exposure and risk assessment for zinc.
24. Kalbasi M, Racz GJ, Lewen-Rudgers LA. Reaction products and solubility of applied zinc compounds in some Manitoba soils. *Soil Sci Soc Am* 1978;125:55–64.
25. Apak, R. Encyclopedia of surface and colloid science. Taylor and Francis; 2006. Adsorption of heavy metal ions on soil surfaces and similar substances: theoretical aspects; p. 484-509.
26. van der Cruijssen-Koeter IW, Vis AN, Roobol MJ, et al. Comparison of screen detected and clinically diagnosed prostate cancer in the European randomized study of screening for prostate cancer, section Rotterdam. *J Urol* 2005;174(1):121–125.10.1097/01.ju.0000162061.40533.0f [PubMed: 15947595]
27. Environmental Protection Agency (EPA). Human health evaluation manual, Part A. Interim Final. Vol. 1. Office of Emergency and Remedial Response; 1989 Dec. Risk assessment guidance for superfund.
28. Canova JL. Elements in South Carolina inferred background soil and stream sediment samples. *S C Geol* 1999;41:11–25.
29. Clemson University Extension: Agriculture Service Laboratory. <http://www.clemson.edu/agsrvlb/index.htm>
30. Polednak AP. Stage at diagnosis of prostate cancer in Connecticut by poverty and race. *Ethn Dis* 1997;7:215–220. [PubMed: 9467704]
31. South Carolina Census Shape File. Obtained from: South Carolina Department of Health and Environmental Control.
32. United States Geological Survey (USGS). Frequently Asked Questions concerning NURE HSSR Data.
33. South Carolina Central Cancer Registry Incidence and Mortality (SCCCR). Office of Public Health Statistics and Information Services. Department of Health and Environmental Control; 2006.
34. Chu KC, Tarone RE, Freeman HP. Trends in prostate cancer mortality among black men and white men in the United States. *Cancer* 2003;97(6):1507–1516.10.1002/cncr.11212 [PubMed: 12627516]
35. Liu L, Cozen W, Bernstein L, Ross RK, Deapen D. Changing relationship between socioeconomic status and prostate cancer incidence. *J Natl Cancer Inst* 2001;93(9):705–709.10.1093/jnci/93.9.705 [PubMed: 11333293]
36. SCBCB. South Carolina Statistical Abstract 2008. South Carolina Budget and Control Board, Office of Research and Statistics; Columbia, SC: 2008.
37. Rothman, KJ.; Greenland, S. Modern epidemiology. 2. Lippincott Williams & Wilkins; Philadelphia: 1989.
38. Wilson EB, Hilferty MM. The distribution of chi-square. *Proc Natl Acad Sci USA* 1931;17:684–688.10.1073/pnas.17.12.684 [PubMed: 16577411]
39. Solymosi, N.; Reiczigel, J.; Harnos, A., et al. A Multitask PostGIS based Vet GIS Framework. 1st OIE International Conference Use of GIS in Veterinary Activities; October 2006; Silvi Marina, Abruzzo, Italy. 2006. <http://epi.univet.hu/portal/sn/kutatas/epidemiologia/terbeli-epidemiologia/betegseg-terkepezes/gisconference/oiegis.pdf>
40. Hebert JR, Hurley TG, Olendzki B, Ma Y, Teas J, Hampl JS. Nutritional and socioeconomic factors in relation to prostate cancer mortality: a cross-national study. *J Natl Cancer Inst* 1998;90:1637–1647.10.1093/jnci/90.21.1637 [PubMed: 9811313]
41. Nelson WG, DeWeese TL, DeMarzo AM. The diet, prostate inflammation, and the development of prostate cancer. *Cancer Metastasis Rev* 2002;21:13–16.
42. Lichtenstein P, Holm NV, Verkasalo PK, et al. Environmental and heritable factors in the causation of cancer—analyses of cohorts of twins from Sweden, Denmark, and Finland. *N Engl J Med* 2000;343:78–85.10.1056/NEJM200007133430201 [PubMed: 10891514]

43. Waalkes MP, Rehm S. Carcinogenicity of oral cadmium in the male-Wistar (WF/NCr) rat: effect of chronic dietary zinc deficiency. *Fundam Appl Toxicol* 1992;19:5–12.10.1016/0272-0590(92)90089-Z
44. Vogt TM, Ziegler RG, Graubard BI. Serum selenium and risk of prostate cancer in U.S. blacks and whites. *Int J Cancer* 2003;103:664–670.10.1002/ijc.10866 [PubMed: 12494476]
45. Elmes ME. Apoptosis in the small intestine of zinc-deficient and fasted rats. *J Pathol* 1977;123(4): 219–223.10.1002/path.1711230404 [PubMed: 592026]
46. Liang JY, Liu YY, Zou J, Franklin RB, Costello LC, Feng P. Inhibitory effect of zinc on human prostatic carcinoma cell growth. *Prostate* 1999;40(3):200–207.10.1002/(SICI)1097-0045(19990801)40:3<200::AID-PROS8>3.0.CO;2-3 [PubMed: 10398282]
47. Achanzar WE, Diwan BA, Liu J, Quader ST, Webber MM, Waalkes MP. Cadmium-induced malignant transformation of human prostate epithelial cells. *Cancer Res* 2001;61:455–458. [PubMed: 11212230]
48. Lonnerdal B. Dietary factors influencing zinc absorption. *J Nutr* 2000;130:1378S–1383S. [PubMed: 10801947]
49. Reed JM, Stich SR. The uptake of testosterone and zinc in vitro by the human benign hypertrophic prostate. *J Endocrinol* 1973;58(5):483–486.
50. Waalkes MP, Coogan TP, Barter RA. Toxicological principles of metal carcinogenesis with special emphasis on cadmium. *Crit Rev Toxicol* 1992;22(3,4):175–201. [PubMed: 1388705]
51. Oliver MN, Matthews KA, Siadaty M, Hauck FR, Pickle LW. Geographic bias related to geocoding in epidemiologic studies. *Int J Health Geogr* 2005;4:29.10.1186/1476-072X-4-29 [PubMed: 16281976]
52. Krieger N, Waterman P, Lemieux K, Zierler S, Hogan JW. On the wrong side of the tracts? Evaluating the accuracy of geocoding in public health research. *Am J Public Health* 2001;91(7):1114–1116. [PubMed: 11441740]
53. Le Marchand L, Kolonel LN, Hankin JH, Yoshizawa CN. Relationship of alcohol consumption to diet: a population-based study in Hawaii. *Am J Clin Nutr* 1989;49:567–572. [PubMed: 2923090]
54. The Nutrition Data System for Research (NDS-R Version 4.03_31). Nutrition Coordinating Center (NCC), University of Minnesota; Minneapolis, MN:
55. South Carolina Office of Research and Statistics. South Carolina Rural Health Report. SC Budget and Control Board; Columbia, SC: 2005.
56. Grubestic TH, Matisziw TC. On the use of ZIP codes and ZIP code tabulation areas (ZCTAs) for the spatial analysis of epidemiological data. *Int J Health Geogr* 2006;5:58.10.1186/1476-072X-5-58 [PubMed: 17166283]
57. Krieger N, Waterman P, Chen JT, Soobader MJ, Subramanian SV, Carson R. Zip code caveat: bias due to spatiotemporal mismatches between zip codes and US census-defined geographic areas—the Public Health Disparities Geocoding Project. *Am J Public Health* 2002;92(7):1100–1102. [PubMed: 12084688]

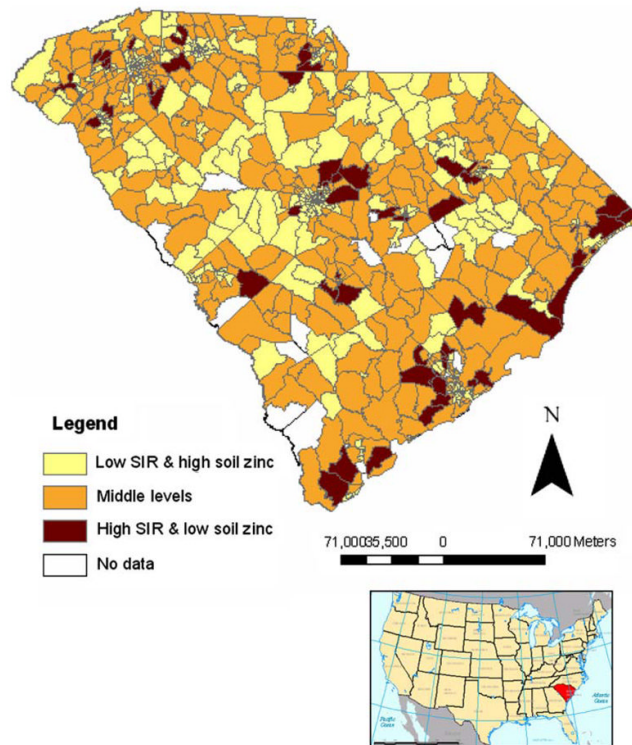


Fig. 1. Seven-year (1996–2002) prostate cancer SIRs overlaid with median soil zinc concentration categories. High or low SIRs defined as having an age-standardized observed prostate cancer incidence greater or less than, respectively, those expected based on age-specific statewide rates. Significance was assessed by calculating 95% confidence intervals for SIRs within each census tract. High soil zinc is defined as greater than or equal to the median statewide concentration (≥ 13.4 ppm); low soil zinc is defined as less than the median statewide concentration (< 13.4 ppm). Inset map of United States highlighting South Carolina is included for reference

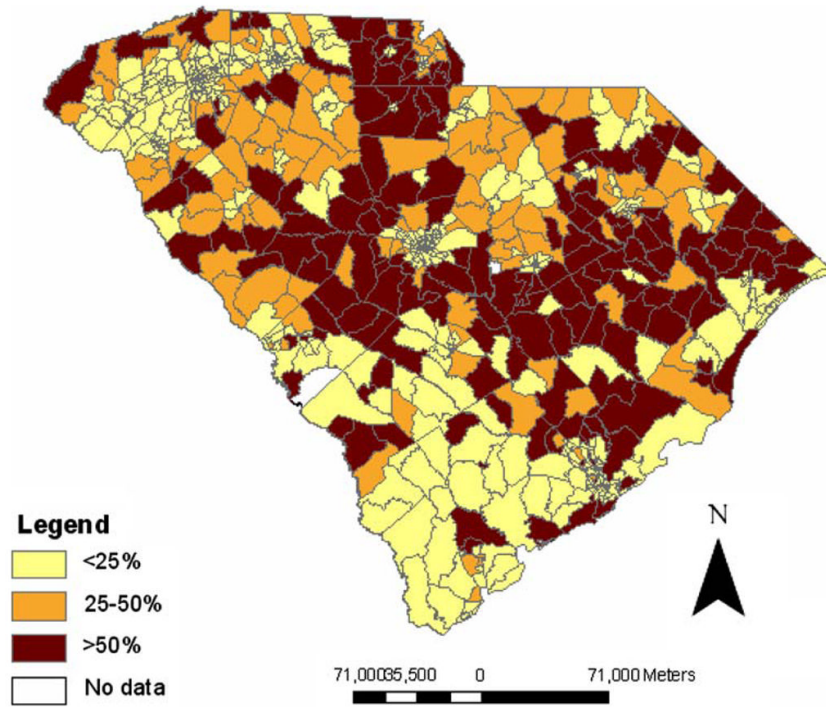


Fig. 2. Percentage of per capita groundwater use in South Carolina by 1990 census tract

Table 1

Characteristics of evaluable prostate cancer cases (1996–2002, $n = 17,665$) and census tracts (1990, $n = 854$) during study period

Variable	Number (%)
<i>Individual-level characteristics</i>	
Race	
African-American (Black)	5,139 (29)
European-American (White)	12,193 (69)
Other/unknown	333 (2)
Disease stage at diagnosis	
Localized	12,894 (73)
Regional	1,793 (10)
Distant/metastasized	827 (5)
Unstageable/unknown	2,151 (12)
Disease grade at diagnosis	
Well differentiated	1,177 (7)
Moderately differentiated	11,579 (66)
Poorly differentiated	3,175 (18)
Undifferentiated	98 (1)
Not determined	1,636 (9)
Age (mean \pm SD) ^a	68 \pm 9
<i>Census tract-level characteristics</i>	
Groundwater use	
Low (< 50%)	682 (80)
High (\geq 50%)	172 (20)
No. of agricultural areas	
Low (< 15)	270 (32)
Medium (15–42)	291 (34)
High (> 42)	293 (34)
No. of hazardous waste (CERCLA) ^b sites	
0	491 (57)
1	196 (23)
2	86 (10)
3	40 (5)
\geq 4	41 (5)

^aStandard deviation

^bComprehensive Environmental Response, Compensation, and Liability Act

Table 2Univariate models of covariates and exposures predicting PrCA incidence^a in SC, 1996–2002

Variables	RR ^b	95% CI ^c
No. of agriculture areas ^d		
Low (< 15)	Referent	–
Medium (15–42)	1.026	0.952, 1.108
High (> 42)	1.033	0.944, 1.129
No. of hazardous waste (CERCLA) ^e sites		
0	Referent	–
1	1.011	0.941, 1.086
2	0.984	0.894, 1.084
3	1.051	0.929, 1.189
≥4	1.055	0.929, 1.192
Groundwater use ^f		
Low (< 50%)	Referent	–
High (≥50%)	0.941	0.862, 1.026
Zinc concentration ^g	0.998	0.996, 1.001
Zinc concentration ^d		
High (> 18.0 ppm)	Referent	–
Medium (10.9–18.0 ppm)	1.070	0.990, 1.159
Low (< 10.9 ppm)	1.061	0.979, 1.151

^a Adjusted for median household income and race (% AA)^b Rate ratio^c Confidence interval^d Tertiles^e Comprehensive Environmental Response, Compensation, and Liability Act^f Based on 50% consumption split^g Based on zinc concentration as a continuous variable

Table 3

Effect of high groundwater use^a and: soil zinc levels^b or the number of agricultural^b or hazardous wastes sites on PrCA incidence^c in SC, 1996–2002

Variables	RR ^d	95% CI ^e
High groundwater use and: No. of agricultural areas		
Low (< 59; n = 84)	Referent	–
High (≥59; n = 88)	0.890	0.780, 1.016
High groundwater use and: No. of hazardous waste (CERCLA) ^f sites		
Low (0; n = 97)	Referent	–
High (≥1; n = 75)	0.897	0.792, 1.014
High groundwater use and: Soil zinc concentrations (ppm)		
High (≥13.4 ppm; n = 29)	Referent	–
Low (< 13.4 ppm; n = 143)	1.270	1.079, 1.505

Bold values refer to a statistically significant RR because the confidence interval does not include the value of 1

^a Census tracts with ≥50% groundwater consumption only

^b Above or below median

^c Adjusted for median household income and race (% AA)

^d Rate ratio

^e Confidence interval

^f Comprehensive Environmental Response, Compensation, and Liability Act

Table 4Effect of high groundwater use^a, race, and soil zinc^b levels on PrCA incidence^c in SC, 1996–2002

Variables			RR ^d	95% CI ^e
High groundwater use	Low % AA (< 36%)	High zinc (≥13.4 ppm; n = 13)	Referent	–
	Low % AA (< 36%)	Low zinc (< 13.4 ppm; n = 72)	1.007	0.875, 1.157
High groundwater use	High % AA (≥64%)	High zinc (≥13.4 ppm; n = 16)	Referent	–
	High % AA (≥64%)	Low zinc (< 13.4 ppm; n = 71)	0.974	0.843, 1.127

^aCensus tracts with ≥50% groundwater consumption^bMedian value (ppm) split within racial categories^cAdjusted for median household income^dRate ratio^eConfidence interval