

8-2008

John Bartlam: Redware Potter?

Lisa Hudgins

University of South Carolina - Columbia, hudgins@mailbox.sc.edu

Follow this and additional works at: https://scholarcommons.sc.edu/sciaa_staffpub



Part of the [Anthropology Commons](#)

Publication Info

Published in *Legacy*, Volume 12, Issue 1-2, 2008, pages 15-15.

<http://www.cas.sc.edu/sciaa/>

© 2008 by The South Carolina Institute of Archaeology and Anthropology

This Article is brought to you by the Archaeology and Anthropology, South Carolina Institute of at Scholar Commons. It has been accepted for inclusion in Faculty & Staff Publications by an authorized administrator of Scholar Commons. For more information, please contact digres@mailbox.sc.edu.

John Bartlam: Redware Potter?

By Lisa R. Hudgins

Research surrounding the John Bartlam pottery site continues to reveal new information about the range of ware produced by the Cainhoy potter. In April of 2008, Garry Atkins and Rod Jellicoe, ceramics scholars from England, joined Michelle Erickson and Robert Hunter of Williamsburg, Virginia, in examining the porcelain and creamware collection excavated at Cainhoy by archaeologist Stan South. These respected scholars confirmed that pieces of molded, unglazed redware pottery found at the Cainhoy site were likely made by potter John Bartlam. The molded redwares are unlike anything found in England, and are identical in design to pineapple wares previously attributed to Bartlam.

In addition to the stylistic similarities, waster sherds found at Cainhoy revealed chunks of refined redware embedded in the emerald green glaze of wares from the site. The red clay intrusions are most likely from slippage during the firing of the kiln, an occurrence familiar to potters everywhere.



Fig. 2: This unglazed pineapple redware sherd is unique to the Bartlam site. (SCIAA photo by Stanley South)

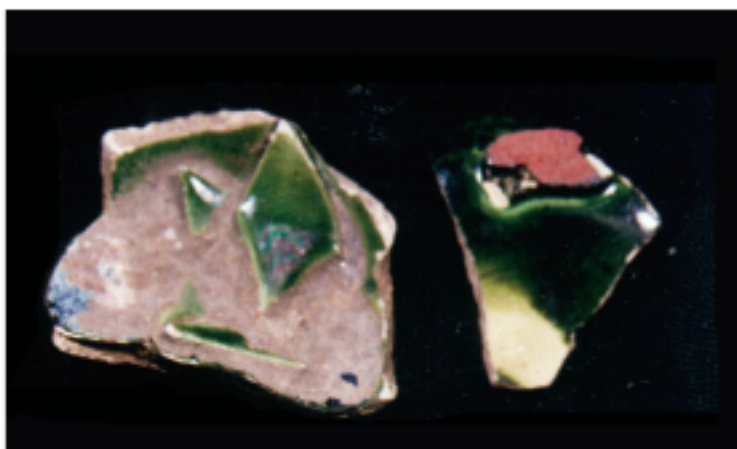


Fig. 3: Waster sherds from Cainhoy with red clay intrusions into the glaze; occurs when two vessels touch during the kiln firing process. (SCIAA photo by Stanley South)

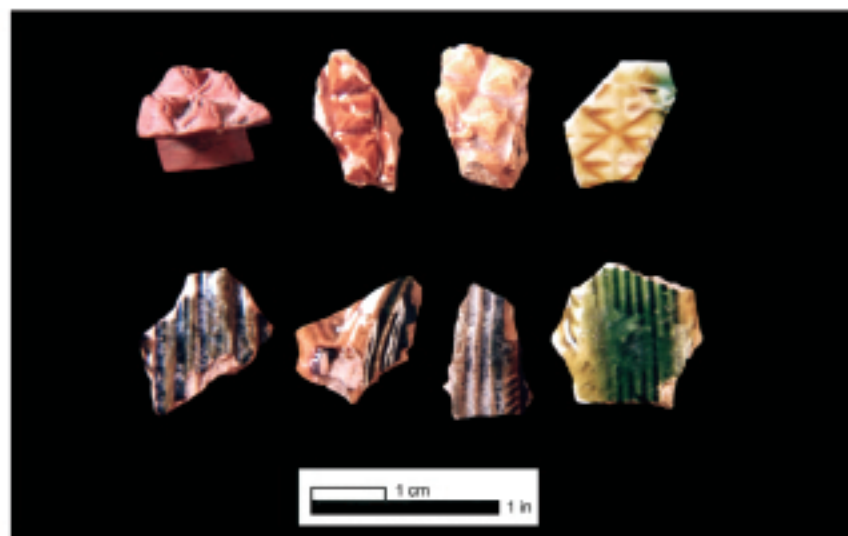


Fig. 1: Pineapple sherds found at Cainhoy. (SCIAA photo by Stanley South)

With the addition of refined redwares to the catalog of Bartlam's wares, we can surmise that the Cainhoy potter was attempting to offer ceramics that would appeal to a wide range of customers, as he offered redware, creamware, and porcelain to the discerning Charleston public.