

6-2020

## The Association Between Phosphodiesterase-5 Inhibitors and Colorectal Cancer in a National Cohort of Patients

S. Scott Sutton

*University of South Carolina - Columbia, [sutton@cop.sc.edu](mailto:sutton@cop.sc.edu)*

Joseph Magagnoli

*University of South Carolina*

Tammy H. Cummings

*University of South Carolina*

James W. Hardin

*William Jennings Bryan Dorn VA Medical Center*

Follow this and additional works at: [https://scholarcommons.sc.edu/phar\\_facpub](https://scholarcommons.sc.edu/phar_facpub)



Part of the [Pharmacy and Pharmaceutical Sciences Commons](#)

---

### Publication Info

Reprinted from *Clinical and Translational Gastroenterology*, Volume 11, Issue 6, 2020.

© 2020 The Author(s). Published by Wolters Kluwer Health, Inc. on behalf of The American College of Gastroenterology

This is an open-access article distributed under the terms of the [Creative Commons Attribution-NonCommercial-No Derivatives License 4.0 \(CC BY-NC-ND\)](#), where it is permissible to download and share the work provided it is properly cited.

This Article is brought to you by the Pharmacy, College of at Scholar Commons. It has been accepted for inclusion in Faculty Publications by an authorized administrator of Scholar Commons. For more information, please contact [dillarda@mailbox.sc.edu](mailto:dillarda@mailbox.sc.edu).



### Cohort selection

The cohort for this study includes all male veterans aged 18 years and older with a diagnosis of ED. ICD revision 9 and 10 codes including 302.72, 607.84, and N52.9x were used to code ED between January 2001 and December 31, 2016. The study index date for patients was defined as the first diagnosis of ED. The study period, for each patient, was defined as the time between index and study endpoint. The baseline period was defined as 1 year before study index.

We used several exclusionary criteria. Patients were included if they had at least 1 year between their VA enrollment date and study index date. To account for latency bias, patients were excluded if they had a diagnosis of colorectal cancer or died up until 1 year after index (12,13). Patients were excluded if they did not have any values of estimated glomerular filtration rate (eGFR), systolic, diastolic blood pressure, body mass index (BMI), or serum cholesterol during the baseline period to ensure proper medical surveillance. Furthermore, patients who had a PDE-5 inhibitor prescription during baseline were excluded. Patients with prescriptions for nitroglycerin were excluded from the study because PDE-5 inhibitors are contraindicated for patients on nitroglycerin. To ensure whether patients had the opportunity to be diagnosed with colorectal cancer, all patients were required to have at least 1 colonoscopy during the study period. Colonoscopies were extracted from the outpatient claims using Current Procedure Terminology codes: 45378-45398. Patients with pulmonary arterial hypertension were excluded using the ICD-9/10 diagnosis codes (416.0, 416.8, 416.9, I27.2x, I27.81, I27.89, and I27.9) and any patient with a PDE-5 inhibitor prescription for greater than 1 pill per day. Pills per day were calculated using the quantity supplied divided by the days supplied. Patients were followed up from index until

1. the first diagnosis of colorectal cancer
2. death
3. the end of study period December 31, 2018.

### Outcome

The outcome for this study was the development of colorectal cancer, defined as the first diagnosis of the following ICD-9 and 10 codes: 153.x, 154.0, 154.1, C18.3, C18.4, C18.5, C18.6, C18.7, C18.8, C18.9, C19, and C20 (12).

### Study variables

The primary predictor of interest is the use of PDE-5 inhibitors. PDE-5 inhibitors comprised sildenafil, tadalafil, vardenafil, and avanafil. We quantified the exposure to PDE-5 inhibitors in 2 ways. First, patients who had at least 1 prescription for a PDE-5 inhibitor were classified as PDE-5 inhibitor users and those without a prescription for a PDE-5 were classified as never users. Second, we used the cumulative milligrams (mg) prescribed for each PDE-5 inhibitor. Dosages were extracted from the drug name and summed over the study period.

In addition to PDE-5 use, we also included covariates to account for baseline demographic and health differences. Demographic factors included age, race, and index year. Baseline health conditions included the Charlson comorbidity index, diabetes, tobacco usage, BMI, systolic and diastolic blood pressure, eGFR (chronic kidney disease-epi formula), total serum cholesterol, and family history of gastrointestinal malignant neoplasm and inflammatory bowel disease (IBD). Baseline laboratory values including eGFR

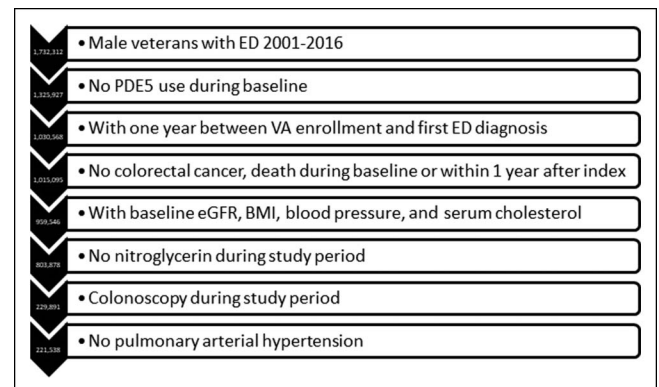
and serum cholesterol were extracted using logical observation identifiers names and codes (see Appendix, Supplementary Digital Content 1, <http://links.lww.com/CTG/A281>). Diagnoses of the family history of gastrointestinal malignant neoplasm, diabetes, tobacco usage were coded based on the ICD-9 and ICD-10 diagnoses codes (see Appendix, Supplementary Digital Content 1, <http://links.lww.com/CTG/A281>).

### Statistical analysis

The statistical analysis occurred in 2 steps. First, we compared the baseline characteristics between those exposed to PDE5 inhibitors and the never exposed patients. Second, we displayed the Kaplan–Meier survival curves for the PDE-5 exposed and unexposed cohorts to display the unadjusted survival curves. We used the multivariate Cox proportional hazards models to estimate the hazard of developing colorectal cancer. Our initial model compares the hazard of those exposed to any PDE-5 inhibitor with that of those never exposed. Next, we estimated the effect of additional dosages of each specific PDE-5 inhibitor; however, avanafil was excluded from drug-specific models because of low sample counts. A subanalysis was conducted on patients who had monotherapy (i.e., exposed to only 1 PDE-5 inhibitor) compared with those who were never exposed to sildenafil or vardenafil (due to sample sizes). In addition to estimating the hazard ratios per additional dosages, we also estimated the hazard ratios for the total number of PDE-5 prescriptions. Prescription counts were categorized into 5 groups (1–4, 5–10, 11–15, 16–20, and 21+).

## RESULTS

In this study, we found 1.7 million male veterans with a diagnosis for ED over the years 2001–2016. We excluded 406,385 patients who had a PDE-5 inhibitor prescribed before study index. In total, 295,359 patients were excluded because they did not have at least 1 year between VA enrollment and study index; 2,081 patients who had colorectal cancer up until 1 year after index were excluded; 13,392 patients were excluded because they died within 1 year after index; 55,549 patients were excluded because they were missing baseline laboratory test results; 155,668 patients with a prescription for nitroglycerine were removed from the study; 573,987 patients were excluded because they did not have a colonoscopy during the study period; and 8,353 patients were excluded for pulmonary



**Figure 1.** Study attrition. BMI, body mass index; ED, erectile dysfunction; eGFR, estimated glomerular filtration rate; PDE, phosphodiesterase; VA, Veterans Affairs.

**Table 1. Demographic and baseline clinical characteristics**

Variable	PDE-5 inhibitor use		P value	Std diff
	Never (N = 29,227)	Yes (N = 192,691)		
Age	60.51 (9.567)	57.13 (8.524)	<0.001	0.3739
Race				
Asian	115 (0.393%)	916 (0.476%)	<0.001	0.2886
Black	4,802 (16.402%)	54,332 (28.26%)		
Latino/Hispanic	98 (0.335%)	733 (0.381%)		
Other/unknown	2,234 (7.631%)	11,171 (5.81%)		
White	22,028 (75.24%)	125,109 (65.072%)		
Charlson comorbidity index	1.17 (1.564)	0.75 (1.244)	<0.001	0.2930
BMI				
Normal	4,370 (14.926%)	29,219 (15.198%)	<0.001	0.0482
Obese	13,856 (47.327%)	86,250 (44.861%)		
Overweight	10,898 (37.224%)	75,778 (39.414%)		
Underweight	153 (0.523%)	1,014 (0.527%)		
eGFR	78.89 (19.46)	83.48 (17.979)	<0.001	0.2455
Total serum cholesterol (mg/dL)	181.91 (40.724)	186.46 (40.25)	<0.001	0.1125
Systolic blood pressure	133.29 (17.282)	132.2 (16.074)	<0.001	0.0652
Diastolic blood pressure	77.15 (10.971)	78.71 (10.408)	<0.001	0.1463
Family history of malignant GI neoplasm	245 (0.837%)	1,793 (0.933%)	0.117	0.0109
Diabetes	7,976 (27.243%)	39,360 (20.472%)	<0.001	0.1577
Smoking	4,807 (16.419%)	36,606 (19.04%)	<0.001	0.0682
IBD	290 (0.991%)	1,544 (0.803%)	0.001	0.0212
Statin use	10,618 (36.267%)	122,965 (63.957%)	<0.001	0.5766
NSAID use	20,311 (69.5%)	146,573 (76.1%)	<0.001	0.1487
Index year	2,006.88 (4.282)	2,006.84 (3.913)	0.132	0.0091
Days in study	3,502.84 (1,560.903)	3,828.63 (1,450.143)	<0.001	0.2163

Format: categorical variables N (%); continuous variables mean (SD).  
 BMI, body mass index; eGFR, estimated glomerular filtration rate; GI, gastrointestinal; IBD, inflammatory bowel disease; NSAID, nonsteroidal anti-inflammatory drug; PDE, phosphodiesterase.

arterial hypertension. After all exclusionary criteria, 221,538 patients remained in the study cohort (Figure 1).

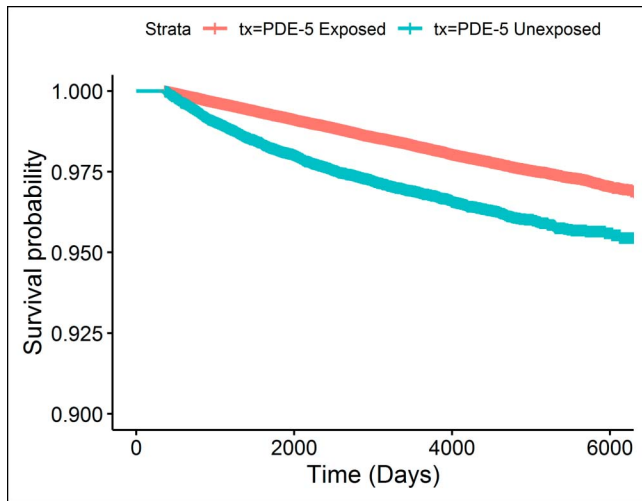
Table 1 displays the demographic and baseline clinical characteristics for patients who never used a PDE-5 inhibitor (n = 29,227) and those who had at least 1 PDE-5 inhibitor prescription (n = 192,691). On average, those who never used a PDE-5 inhibitor are older (60.51 vs 57.13 years, respectively), have a higher Charlson

comorbidity index (1.17 vs 0.75, respectively), have a lower eGFR (78.89 vs 83.48), have lower total serum cholesterol (181.91 vs 186.46), and have a higher prevalence of diabetes (27.24% vs 20.47%). Patients who took a PDE-5 inhibitor have a higher prevalence of statin usage (63.95% vs 36.27%) and are more likely to be smokers (19.04% vs 16.42%). The breakdown of PDE-5 use by drug is shown in Table 2. Of the PDE-5 inhibitor users, 86% has at least 1

**Table 2. PDE-5 inhibitor usage**

PDE-5 inhibitor	N (% all PDE-5)	Monotherapy N (% within drug)	Average cumulative mg dose (SD)
Sildenafil	166,208 (86.449%)	50,758 (30.50%)	1,884 (2,514.19)
Tadalafil	7,896 (4.107%)	202 (2.60%)	135.34 (227.69)
Vardenafil	140,067 (72.853%)	25,514 (18.20%)	253.73 (306.12)
Avanafil	117 (0.061%)	1 (0.95%)	433.33 (517.28)

PDE, phosphodiesterase.



**Figure 2.** Kaplan–Meier survival curves. PDE, phosphodiesterase.

prescription for sildenafil, 72% had a prescription for vardenafil, 4% for tadalafil, and 0.9% for avanafil. Among those with a sildenafil prescription, 30% had no other PDE-5 inhibitors. Among those with a vardenafil prescription, 18% had no other PDE-5 inhibitors. Among those with tadalafil exposure, 2.6% were exposed only to tadalafil. Among those exposed to avanafil, only 1 patient was exposed only to avanafil. Figure 2 presents the unadjusted Kaplan–Meier survival curves for those exposed and unexposed to a PDE-5 inhibitor. The Kaplan–Meier curves showed a lower risk of colorectal cancer throughout the study time. In Table 3, we present the results of the Cox proportional hazard model, examining the association between any PDE-5 inhibitor use and colorectal cancer. Those who had any exposure to a PDE-5 inhibitor have an 18% lower hazard of colorectal cancer (hazard ratio [HR] = 0.816, 95% confidence interval [CI] = 0.754–0.882). Black patients had a higher hazard of colorectal cancer compared with white patients (HR = 1.168, 95% CI = 1.089–1.252). Other risk factors for colorectal cancer included age (HR = 1.056, 95% CI = 1.052–1.060), Charlson comorbidity (HR = 1.067, 95% CI = 1.042–1.093), total serum cholesterol (HR = 1.005, 95% CI = 1.003–1.007), diastolic blood pressure (HR = 1.002, 95% CI = 1.001–1.003), diabetes (HR = 1.196, 95% CI = 1.105–1.295), smoking (HR = 1.164, 95% CI = 1.075–1.259), and IBD (HR = 1.411, 95% CI = 1.061–1.876). Statins, consistent with Poynter et al. (14), are associated with a decrease in the hazard of colorectal cancer (HR = 0.613, 95% CI = 0.576–0.652).

The results from the association between drug dosage and colorectal cancer are shown in Table 4. For each additional 100-mg dosage of sildenafil, the hazard of colorectal cancer is reduced by 2.4% (HR = 0.976, 95% CI = 0.973–0.979). For each additional 10-mg dose of tadalafil, the hazard of colorectal cancer is reduced by 1.7% (HR = 0.983, 95% CI = 0.972–0.996). We find no statistically significant association for each additional 10-mg vardenafil dose (HR = 1.000, 95% CI = 0.999–1.002). Other results are similar to those of the Cox proportional hazards model examining the association between any PDE-5 inhibitor use and colorectal cancer. Table 5 displays the subanalysis conducted on those with no PDE-5 inhibitor exposure and those with sildenafil-only treatment, and secondarily those with no PDE-5 inhibitor exposure and vardenafil-only treatment. We find that each additional 100 mg of sildenafil, the hazard of colorectal cancer is reduced by 1% (HR = 0.99, 95% CI = 0.984–0.995). For each additional 10 mg of

**Table 3.** Multivariate Cox proportional hazards model estimating the hazard of developing colorectal cancer

Variable	HR (95% CI)
PDE-5 inhibitor use (referent = never used)	
Yes	0.828 (0.766–0.895)
Age	1.051 (1.047–1.055)
Race (referent = White)	
Asian	1.188 (0.765–1.845)
Black	1.283 (1.196–1.376)
Latino/Hispanic	0.942 (0.567–1.565)
Other/unknown	0.831 (0.729–0.947)
Charlson comorbidity index	1.081 (1.056–1.106)
BMI (referent = underweight)	
Normal	1.24 (0.795–1.934)
Obese	1.277 (0.821–1.987)
Overweight	1.151 (0.74–1.789)
eGFR	1.001 (1–1.003)
Total serum cholesterol (mg/dL)	1.006 (1.003–1.008)
Systolic blood pressure	0.997 (0.993–1)
Diastolic blood pressure	1.002 (1.001–1.003)
Family history of malignant GI neoplasm	1.091 (0.802–1.484)
Diabetes	1.23 (1.136–1.331)
Smoking	1.211 (1.119–1.31)
IBD	1.32 (0.993–1.755)
Statins	0.632 (0.594–0.673)
Index year	0.938 (0.929–0.947)
NSAID use	0.449 (0.421–0.479)

BMI, body mass index; CI, confidence interval; eGFR, estimated glomerular filtration rate; GI, gastrointestinal; HR, hazard ratio; IBD, inflammatory bowel disease; NSAID, nonsteroidal anti-inflammatory drug; PDE, phosphodiesterase.

vardenafil, there is an associated 0.7% higher hazard of colorectal cancer (HR = 1.007, 95% CI = 1.002–1.011). Table 6 displays the results of the Cox model estimating PDE-5 exposure by prescription counts. We found that patients with less than or equal to 10 prescriptions are not statistically significantly different in the risk of colorectal cancer compared with the unexposed (1–4 HR = 1.024, 95% CI = 0.936–1.119; 5–10 HR = 0.969, 95% CI = 0.877–1.071). Patients with greater than 10 prescriptions for a PDE-5 have a statistically significantly lower risk of colorectal cancer (11–15 HR = 0.878, 95% CI = 0.774–0.995; 16–20 HR = 0.841, 95% CI = 0.73–0.968; 21+ HR = 0.536, 95% CI = 0.486–0.59). Furthermore, the estimates suggest that the risk of colorectal cancer decreases for additional prescriptions of a PDE-5, ultimately resulting in a 46% reduction in risk for those with 21 or more prescriptions (21+ HR = 0.536, 95% CI = 0.486–0.59).

## DISCUSSION

In this study, among patients receiving care in the VA system with ED, we found that those who had any exposure to a PDE-5

**Table 4. Multivariate Cox proportional hazards model estimating the hazard of colorectal cancer by dose**

Variable	HR (95% CI)
Sildenafil per additional 100 mg	0.977 (0.974–0.979)
Tadalafil per additional 10 mg	0.985 (0.973–0.997)
Vardenafil per additional 10 mg	1.001 (0.999–1.002)
Age	1.044 (1.04–1.048)
Race (referent = White)	
Asian	1.245 (0.802–1.934)
Black	1.438 (1.341–1.543)
Latino/Hispanic	1.026 (0.618–1.705)
Other/unknown	0.839 (0.736–0.956)
Charlson comorbidity index	1.071 (1.046–1.096)
BMI (referent = underweight)	
Normal	1.269 (0.814–1.979)
Obese	1.279 (0.822–1.99)
Overweight	1.18 (0.758–1.835)
eGFR	1.002 (1–1.003)
Total serum cholesterol (mg/dL)	1.005 (1.003–1.007)
Systolic blood pressure	0.997 (0.994–1.001)
Diastolic blood pressure	1.002 (1.001–1.002)
Family history of malignant GI neoplasm	1.088 (0.8–1.48)
Diabetes	1.197 (1.106–1.295)
Smoking	1.205 (1.114–1.304)
IBD	1.313 (0.987–1.746)
Statins	0.688 (0.647–0.732)
Index year	0.928 (0.919–0.938)
NSAID use	0.468 (0.439–0.499)

BMI, body mass index; CI, confidence interval; eGFR, estimated glomerular filtration rate; GI, gastrointestinal; HR, hazard ratio; IBD, inflammatory bowel disease; NSAID, nonsteroidal anti-inflammatory drug.

inhibitor had a lower hazard of colorectal cancer. Furthermore, we estimated the effect of additional dosages of each specific PDE-5 inhibitor (excluding avanafil). We found for each additional 100-mg dosage of sildenafil and each additional 10-mg dose of tadalafil, the hazard of colorectal cancer is reduced. In the subanalysis, patients who had monotherapy with sildenafil only had a decreased hazard of colorectal cancer for each additional 100 mg of treatment. However, for each additional 10 mg of vardenafil, there is a higher hazard of colorectal cancer for those on vardenafil only.

More *in vivo* studies have demonstrated the effectiveness of PDE-5 inhibitors effect on the colon compared with *in vitro* studies. Some *in vivo* studies showed that the sildenafil suppressed the polyp multiplicity in the colon, even by 50% by administering varying dosages of the inhibitor (6,7,10). Growth inhibition of colon tumor cells occurred with the use of PDE-5 inhibitors *in vitro* (and *in vivo*) while enhancing anti-cancer and other drugs (8,11). Mei et al. (4) demonstrated the

**Table 5. Multivariate Cox proportional hazards model estimating the hazard of colorectal cancer for those on monotherapy**

Variable	HR (95% CI)	HR (95% CI)
PDE-5 inhibitor use (referent = never used)		
Sildenafil monotherapy per additional 100 mg	0.991 (0.986–0.997)	
Vardenafil monotherapy per additional 10 mg		1.007 (1.003–1.011)
Age	1.047 (1.041–1.053)	1.041 (1.034–1.048)
Race (referent = White)		
Asian	1.55 (0.855–2.808)	1.006 (0.417–2.424)
Black	1.415 (1.265–1.583)	1.416 (1.249–1.606)
Latino/Hispanic	1.064 (0.506–2.237)	1.762 (0.878–3.536)
Other/unknown	0.858 (0.718–1.026)	0.856 (0.701–1.046)
Charlson comorbidity index	1.089 (1.055–1.124)	1.062 (1.024–1.101)
BMI (referent = underweight)		
Normal	1.146 (0.611–2.151)	1.26 (0.595–2.672)
Obese	1.184 (0.633–2.214)	1.314 (0.622–2.773)
Overweight	1.082 (0.579–2.023)	1.204 (0.571–2.54)
eGFR	1.002 (1–1.005)	1.002 (0.999–1.004)
Total serum cholesterol (mg/dL)	1.003 (1–1.006)	1.004 (1.001–1.008)
Systolic blood pressure	1.001 (0.996–1.007)	1.001 (0.995–1.007)
Diastolic blood pressure	1.002 (1.001–1.003)	1.002 (1.001–1.003)
Family history of malignant GI neoplasm	1.006 (0.615–1.645)	1.089 (0.655–1.811)
Diabetes	1.187 (1.057–1.331)	1.142 (1.006–1.296)
Smoking	1.335 (1.185–1.503)	1.246 (1.093–1.421)
IBD	0.822 (0.502–1.345)	1.027 (0.617–1.708)
Statins	0.756 (0.691–0.828)	0.831 (0.75–0.922)
Index year	0.892 (0.881–0.904)	0.927 (0.912–0.943)
NSAID use	0.446 (0.406–0.49)	0.451 (0.407–0.5)

BMI, body mass index; CI, confidence interval; eGFR, estimated glomerular filtration rate; GI, gastrointestinal; HR, hazard ratio; IBD, inflammatory bowel disease; NSAID, nonsteroidal anti-inflammatory drug; PDE, phosphodiesterase.

effect of sildenafil on proliferation and apoptosis *in vitro* and *in vivo* by implanting nude mice with SW480 or HCT116 human cancer cells by administering sildenafil orally. Similar results were shown *in vitro* and *in vivo* with sildenafil and tadalafil inhibiting tumor growth in immune-competent mice by 50%–70% (9).

Although there is a lack of observational studies evaluating the association of the use of PDE-5 inhibitors and colorectal cancer, some results from our study is consistent with other

**Table 6. Multivariate Cox proportional hazards model estimating the hazard of colorectal by the number of refills**

Variable	HR (95% CI)
PDE-5 exposure refill count (referent = never used)	
1–4	1.024 (0.936–1.119)
5–10	0.969 (0.877–1.071)
11–15	0.878 (0.774–0.995)
16–20	0.841 (0.73–0.968)
21+	0.536 (0.486–0.59)
Age	1.046 (1.041–1.05)
Race (referent = White)	
Asian	1.228 (0.791–1.907)
Black	1.397 (1.302–1.5)
Latino/Hispanic	0.989 (0.595–1.643)
Other/unknown	0.84 (0.737–0.957)
Charlson comorbidity index	1.073 (1.048–1.099)
BMI (referent = underweight)	
Normal	1.251 (0.802–1.951)
Obese	1.263 (0.812–1.965)
Overweight	1.158 (0.745–1.802)
eGFR	1.001 (1–1.003)
Total serum cholesterol (mg/dL)	1.005 (1.003–1.007)
Systolic blood pressure	0.997 (0.994–1.001)
Diastolic blood pressure	1.002 (1.001–1.002)
Family history of malignant GI neoplasm	1.09 (0.801–1.483)
Diabetes	1.21 (1.118–1.31)
Smoking	1.209 (1.117–1.308)
IBD	1.312 (0.987–1.745)
Statins	0.676 (0.635–0.72)
Index year	0.931 (0.922–0.941)
NSAID use	0.464 (0.436–0.495)

BMI, body mass index; CI, confidence interval; eGFR, estimated glomerular filtration rate; GI, gastrointestinal; HR, hazard ratio; IBD, inflammatory bowel disease; NSAID, nonsteroidal anti-inflammatory drug; PDE, phosphodiesterase.

studies. A UK-matched cohort study found a decreased risk for colorectal cancer for those who were PDE-5 inhibitor users (HR = 0.91, 95% CI = 0.85–0.98,  $P = 0.01$ ); however, they did not limit their analyses to men with ED (15). In a Swedish study of men diagnosed with benign colorectal neoplasm had a reduced risk of colorectal cancer (HR = 0.65, 95% CI = 0.49–0.85) while using PDE-5 and an increased cumulative dosage of PDE-5 (16). PDE-5 is effective enough to selectively stimulate apoptosis of colon tumor cells while having minimal effects on normal colon cells (17,18).

Some demographic and risk factors that we adjusted for in our models are included in other literature concerning colorectal cancer. Differences in colorectal cancer are seen in

racial disparities, as blacks are associated with having a higher incidence (19,20). Clinical studies of IBD report that patients have a higher risk of colorectal cancer as well (7,21). Statin users had a decreased risk of colorectal cancer compared with non-statin users (13). Patients with diabetes, consistent with Overbeek et al. (22), have an increased risk of developing colorectal cancer; however, the study did not account for smoking status nor BMI in estimating models as we did. Unlike Mamtani et al., we found an increased total serum cholesterol to be associated with an increased hazard of colorectal cancer similar to another study (13,23). A meta-analysis demonstrated that cigarette smoking is associated with an increased incidence and mortality of colorectal cancer among a sample of 106 studies (24).

To our knowledge, this study is the first population-based study to examine the function of PDE-5 inhibitors along with the risk of colorectal cancer among patients with ED. Our study is unique because it (i) evaluated a national cohort of patients with ED, (ii) evaluated patients who were prescribed PDE-5 inhibitors (sildenafil, tadalafil, vardenafil, and avanafil), and (iii) evaluated PDE-5 usage 2 ways (binary and dosage). However, like many observational studies, there are some factors that may have influenced the outcomes which were not accounted for within this study. First, the population is US male veterans with ED; therefore, our findings may not be generalizable to other patients. We were unable to exclude unmeasured potential confounding factors that may have influenced our outcomes because patients were not randomized to different treatments. Although we attempted to control for select variables by using adjusted models, residual confounding may remain. Finally, medication usage was measured from filled prescriptions, and we cannot confirm that patients adhered to their prescriptions; however, studies have advocated that pharmacy refill rates and prescription claims data are a good depiction for actual medication adherence (25). Despite the limitations of this study, we believe that the data are robust for our large sample within the US Veteran population and will add to the current literature on the incidence of colorectal cancer and the use of PDE-5 inhibitors.

Our study evaluated the association of colorectal cancer and PDE-5 inhibitors among a national cohort of patients with ED within the VA system. Those who were prescribed PDE-5 inhibitors had a reduced hazard of colorectal cancer compared with those who were never prescribed PDE-5 inhibitors. For each additional 100-mg dosage of sildenafil and each additional 10-mg dosage of tadalafil, the hazard of colorectal cancer was reduced as well. According to our research, clinicians should monitor and understand the risks and benefits of PDE-5 inhibitors with the occurrence of colorectal cancer among patients with ED. Further research is needed to confirm the observed association.

#### CONFLICTS OF INTEREST

**Guarantor of the article:** Joseph Magagnoli, MS.

**Specific author contributions:** Study concept and design: S.S.S. and J.M. Acquisition of data: S.S.S. and J.M. Analysis and interpretation of data: J.M. Drafting of the manuscript: all authors. Analysis and interpretation: all authors.

**Financial support:** None to report.

**Potential competing interests:** None to report.

## Study Highlights

### WHAT IS KNOWN

- ✓ Recent preclinical studies including *in vivo*, *in vitro*, and mouse studies suggest that PDE-5 inhibitor use may reduce the risk of colorectal cancer.

### WHAT IS NEW HERE

- ✓ We use a large national cohort of patients being treated in the VA and show that PDE-5 inhibitor use is associated with a lower risk of colorectal cancer.

### TRANSLATIONAL IMPACT

- ✓ PDE-5 inhibitors show evidence to support a new drug development or additional indications for PDE-5 inhibitors.

## REFERENCES

1. Cronin KA, Lake AJ, Scott S, et al. Annual report to the nation on the status of cancer, part I: National cancer statistics. *Cancer* 2018;124:2785–800.
2. Lehrer S, Rheinstein PH, Rosenzweig KE. Mutations of the PDE5A gene confer a survival advantage in patients with colon cancer. *Cancer Prev Res* 2018;11:439–40.
3. Zhu B, Vemavarapu L, Thompson WJ, et al. Suppression of cyclic GMP-specific phosphodiesterase 5 promotes apoptosis and inhibits growth in HT29 cells. *J Cell Biochem* 2005;94:336–50.
4. Mei XL, Yang Y, Zhang YJ, et al. Sildenafil inhibits the growth of human colorectal cancer in vitro and in vivo. *Am J Cancer Res* 2015;5:3311–24.
5. Sharman SK, Islam BN, Hou Y, et al. Cyclic-GMP-elevating agents suppress polyposis in *Apc* Min mice by targeting the preneoplastic epithelium. *Cancer Prev Res (Phila)* 2018;11:81–92.
6. Islam BN, Sharman SK, Hou Y, et al. Sildenafil suppresses inflammation-driven colorectal cancer in mice. *Cancer Prev Res (Phila)* 2017;10:377–88.
7. Lin S, Wang J, Wang L, et al. Phosphodiesterase-5 inhibition suppresses colonic inflammation-induced tumorigenesis via blocking the recruitment of MDSC. *Am J Cancer Res* 2017;7:41–52.
8. Booth L, Roberts JL, Cruickshanks N, et al. PDE5 inhibitors enhance celecoxib killing in multiple tumor types. *J Cell. Physiol* 2015;230:1115–27.
9. Serafini P, Meckel K, Kelso M, et al. Phosphodiesterase-5 inhibition augments endogenous antitumor immunity by reducing myeloid-derived suppressor cell function. *J Exp Med* 2006;203:2691–702.
10. Capuano G, Rigamonti N, Grioni M, et al. Modulators of arginine metabolism support cancer immunosurveillance. *BMC Immunol* 2009;10:1.
11. Tavallai M, Hamed HA, Roberts JL, et al. Nexavar/stivarga and viagra interact to kill tumor cells. *J Cell Physiol* 2015;230:2281–98.
12. Murff HJ, Roumie CL, Greevy RA, et al. Metformin use and incidence cancer risk: Evidence for a selective protective effect against liver cancer. *Cancer Causes Control* 2018;29:823–32.
13. Mamtani R, Lewis JD, Scott FI, et al. Disentangling the association between statins, cholesterol, and colorectal cancer: A nested case-control study. *PLoS Med* 2016;13:e1002007.
14. Poynter J, Gruber SB, Higgins PD, et al. Statins and the risk of colorectal cancer. *N Engl J Med* 2005;352:2184–92.
15. Matthews A, Langan SM, Douglas IJ, et al. Phosphodiesterase type 5 inhibitors and risk of malignant melanoma: matched cohort study using primary care data from the UK clinical practice research datalink. *PLoS Med* 2016;13:e1002037.
16. Huang W, Sundquist J, Sundquist K, et al. Use of phosphodiesterase 5 inhibitors associates with risk of colorectal cancer in men with benign colorectal neoplasms. *Gastroenterology* 2019;157:672–81.e4.
17. Tinsley HN, Gary BD, Thaiparambil J, et al. Colon tumor cell growth-inhibitory activity of sulindac sulfide and other nonsteroidal anti-inflammatory drugs is associated with phosphodiesterase 5 inhibition. *Cancer Prev Res (Phila)* 2010;3:1303–13.
18. Abadi AH, Gary BD, Tinsley HN, et al. Synthesis, molecular modeling and biological evaluation of novel tadalafil analogues as phosphodiesterase 5 and colon tumor cell growth inhibitors, new stereochemical perspective. *Eur J Med Chem* 2010;45:1278–86.
19. Rao SR, Breen N, Graubard BI. Trends in Black-White disparities in breast and colorectal cancer screening rates in a changing screening environment: the Peters-Belson approach using United States National Health Interview Surveys 2000–2010. *Med Care* 2016;54:133–9.
20. Siegel RL, Miller KD, Fedewa SA, et al. Colorectal cancer statistics, 2017. *CA Cancer J Clin* 2017;67:177–93.
21. Stidham RW, Higgins PDR. Colorectal cancer in inflammatory bowel disease. *Clin Colon Rectal Surg* 2018;31:168–78.
22. Overbeek JA, Kuiper JG, van der Heijden AAWA, et al. Sex- and site-specific differences in colorectal cancer risk among people with type 2 diabetes. *Int J Colorectal Dis* 2019;34:269–76.
23. Muka T, Kraja B, Ruitter R, et al. Dietary polyunsaturated fatty acids intake modifies the positive association between serum total cholesterol and colorectal cancer risk: The Rotterdam Study. *J Epidemiol Community Health* 2016;70:881–7.
24. Botteri E, Iodice S, Bagnardi V, et al. Smoking and colorectal cancer: a meta-analysis. *JAMA* 2008;300:2765–78.
25. Osterberg L, Blaschke T. Adherence to medication. *N Engl J Med* 2005;353:487–97.

**Open Access** This is an open-access article distributed under the terms of the Creative Commons Attribution-Non Commercial-No Derivatives License 4.0 (CCBY-NC-ND), where it is permissible to download and share the work provided it is properly cited. The work cannot be changed in any way or used commercially without permission from the journal.